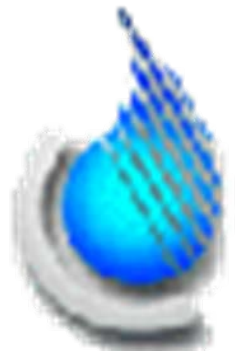
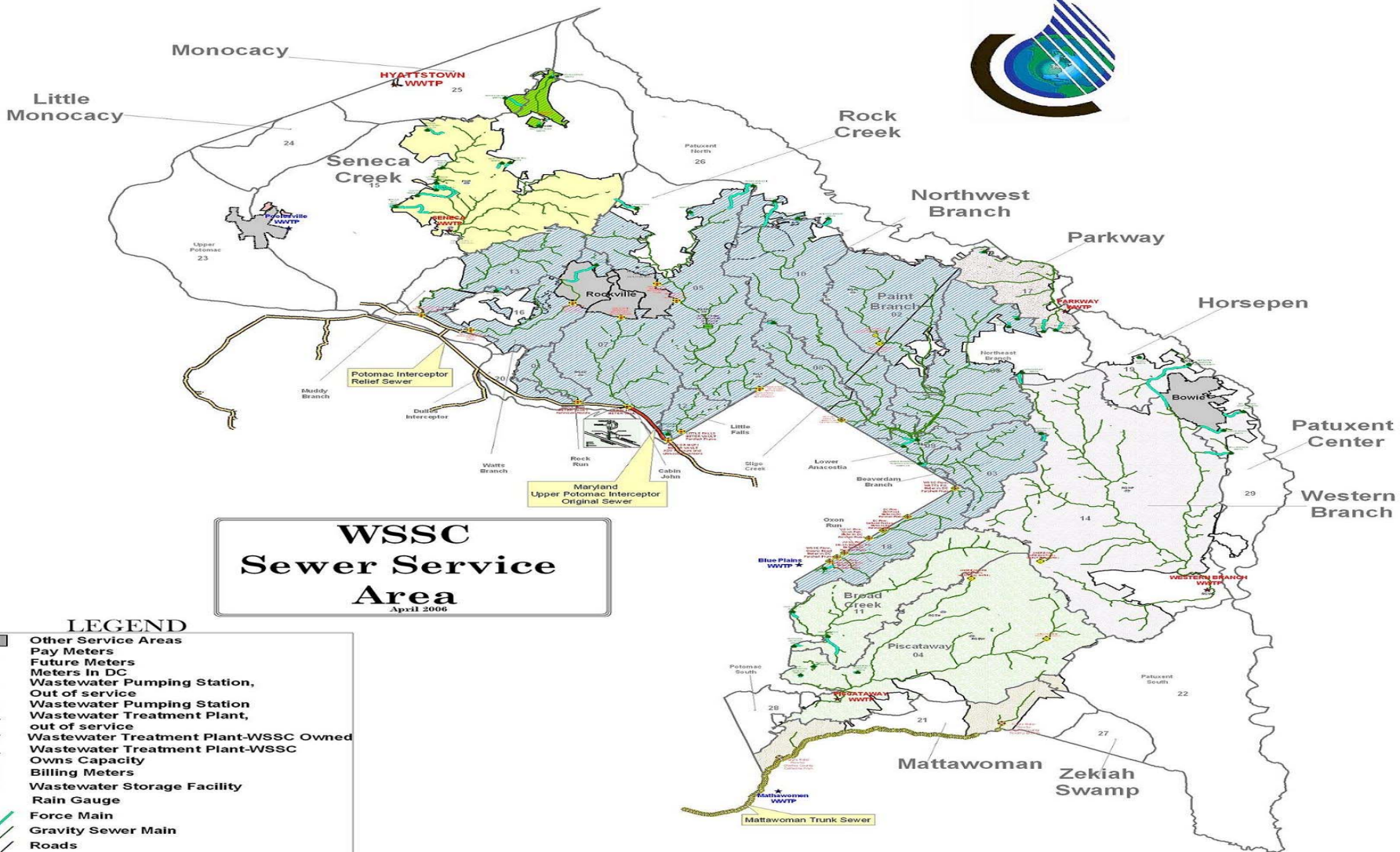
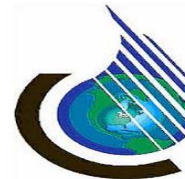


# ON-LINE ANALYZERS AT WSSC WASTEWATER TREATMENT PLANTS



# WASHINGTON SUBURBAN SANITARY COMMISSION



**WSSC  
Sewer Service  
Area**  
April 2006

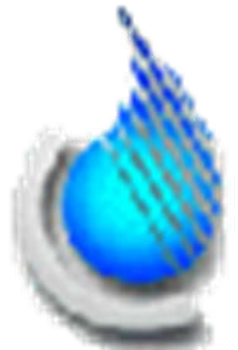
## LEGEND

- Other Service Areas
- Pay Meters
- Future Meters
- Meters In DC
- Wastewater Pumping Station, Out of service
- Wastewater Pumping Station, out of service
- Wastewater Treatment Plant, out of service
- Wastewater Treatment Plant-WSSC Owned
- Wastewater Treatment Plant-WSSC Owns Capacity
- Billing Meters
- Wastewater Storage Facility
- Rain Gauge
- Force Main
- Gravity Sewer Main
- Roads
- Basin Boundary
- Parkway WWTP Service Area
- Blue Plains WWTP Service Area
- Mattawoman WWTP Service Area
- Poolsville WWTP Service Area
- Hyattstown WWTP Service Area
- Damascus WWTP Service Area
- Seneca WWTP Service Area
- Westernbranch WWTP Service Area
- Piscataway WWTP Service Area

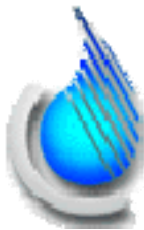
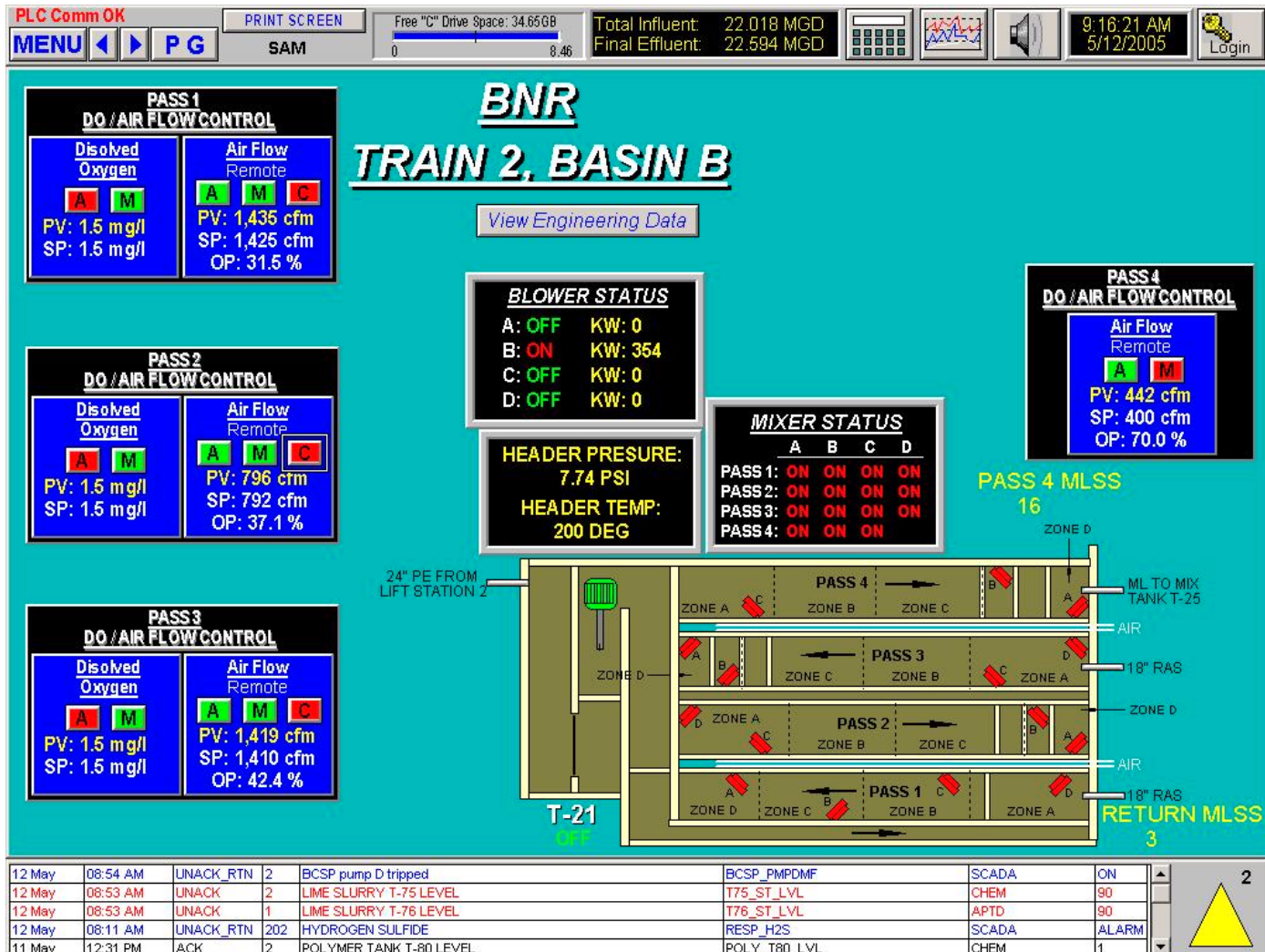


# WSSC WASTEWATER TREATMENT PLANTS

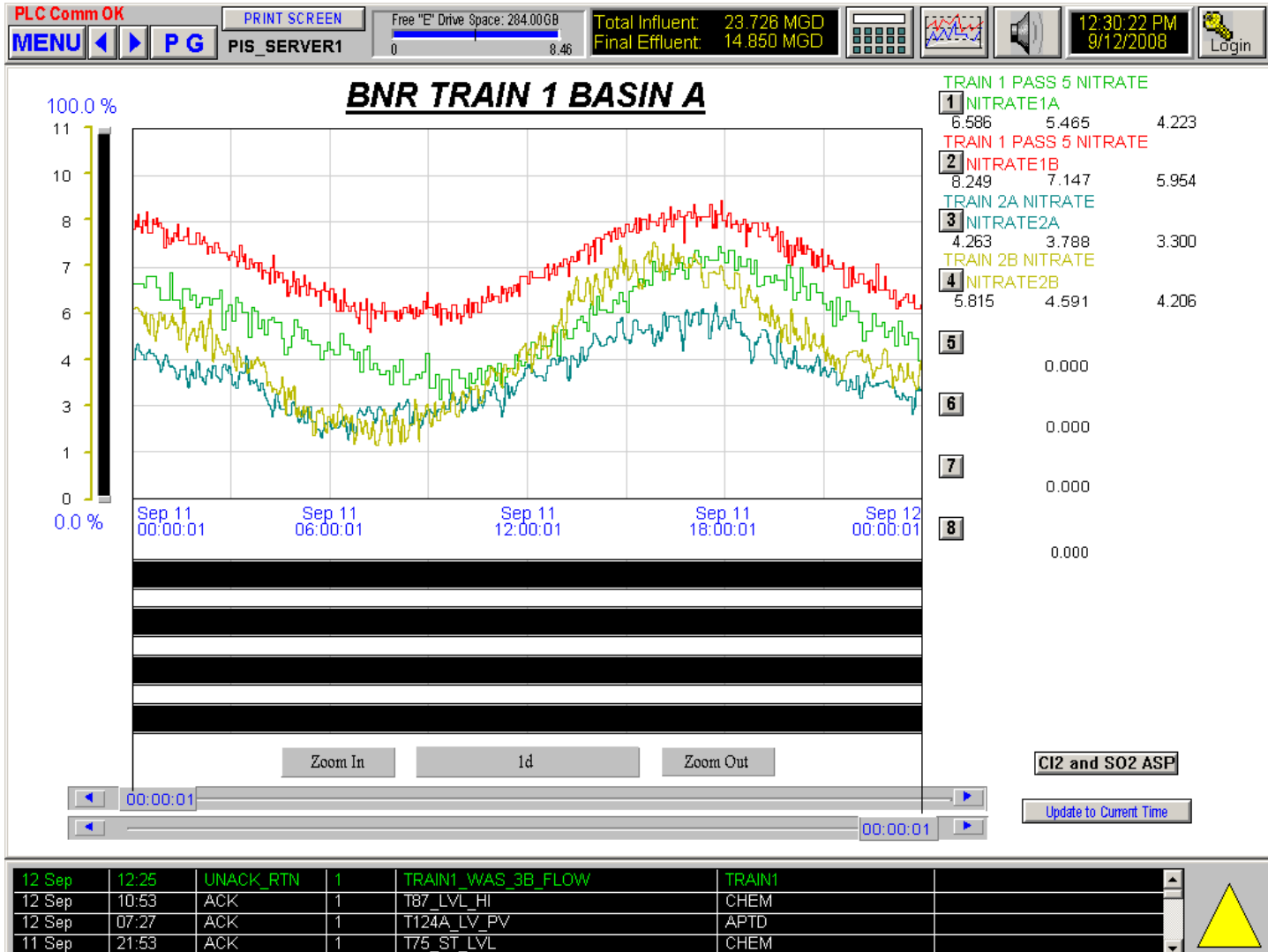
- 30 MGD PISCATAWAY
- 30 MGD WESTERN BRANCH WWTP
- 7.5 MGD PARKWAY WWTP
- 20 MGD SENECA WWTP
- 1.5 MGD DAMASCUS WWTP



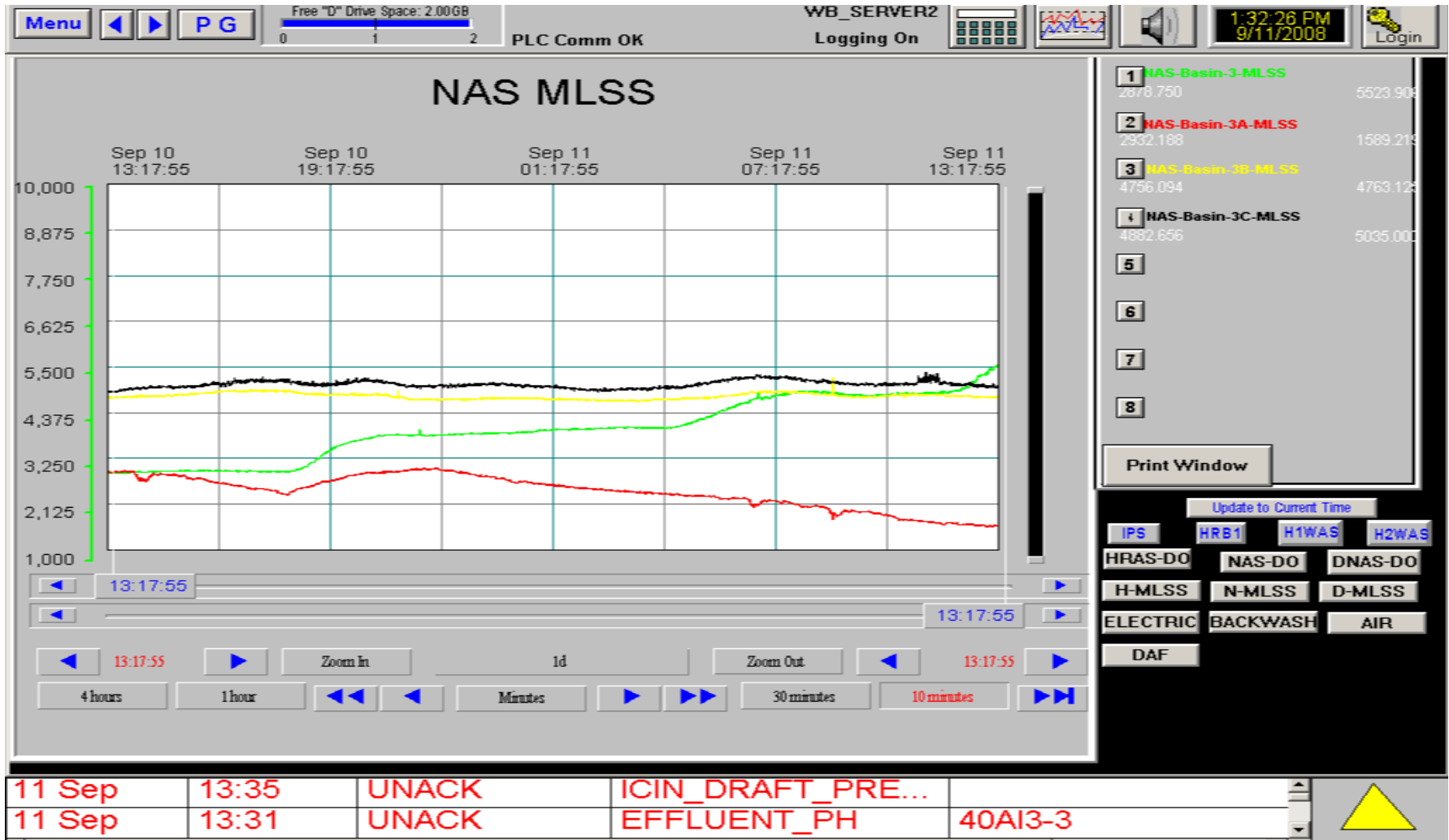
# Piscataway Process Automation



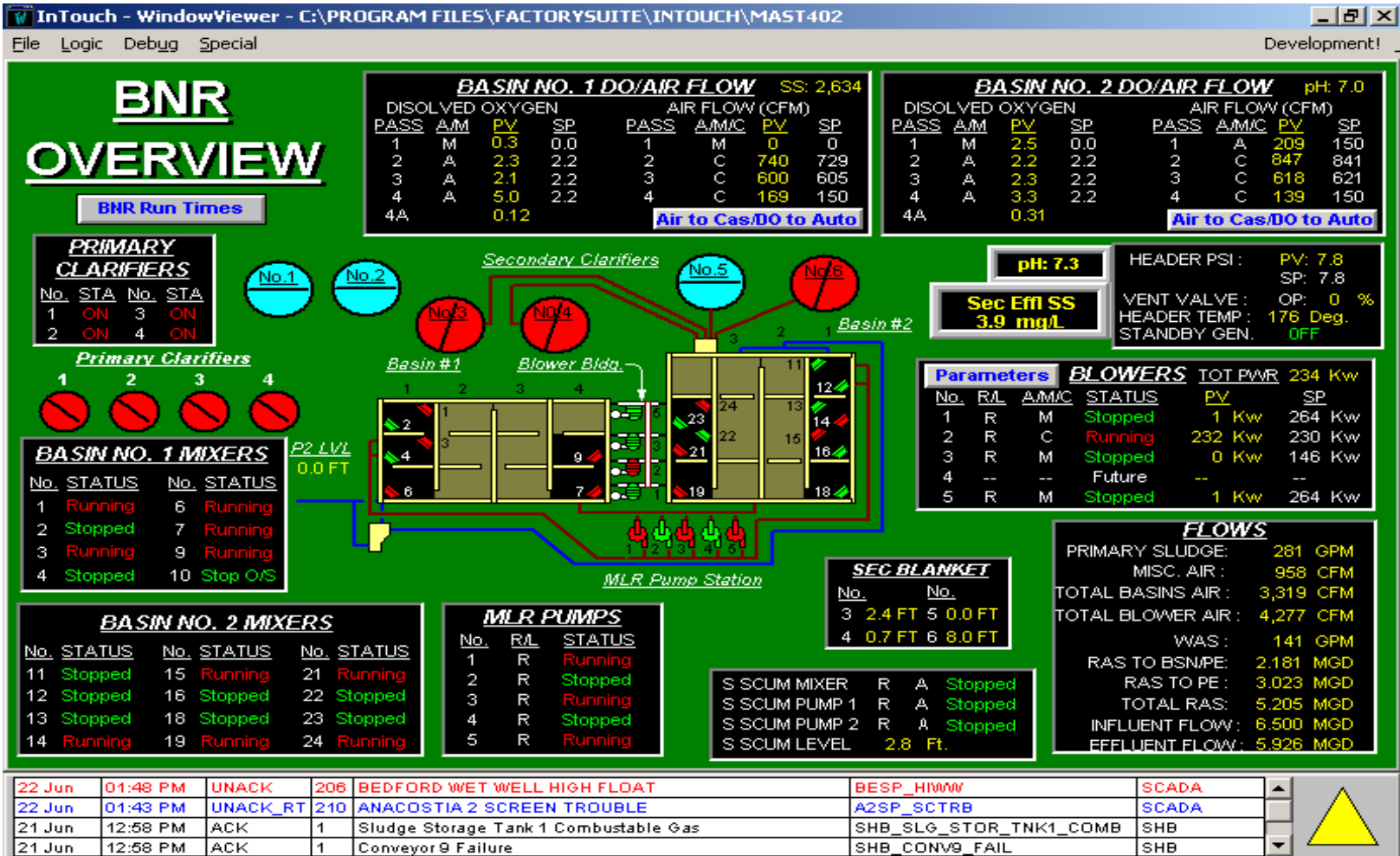
# PISCATAWAY HACH NITRATE RENDS



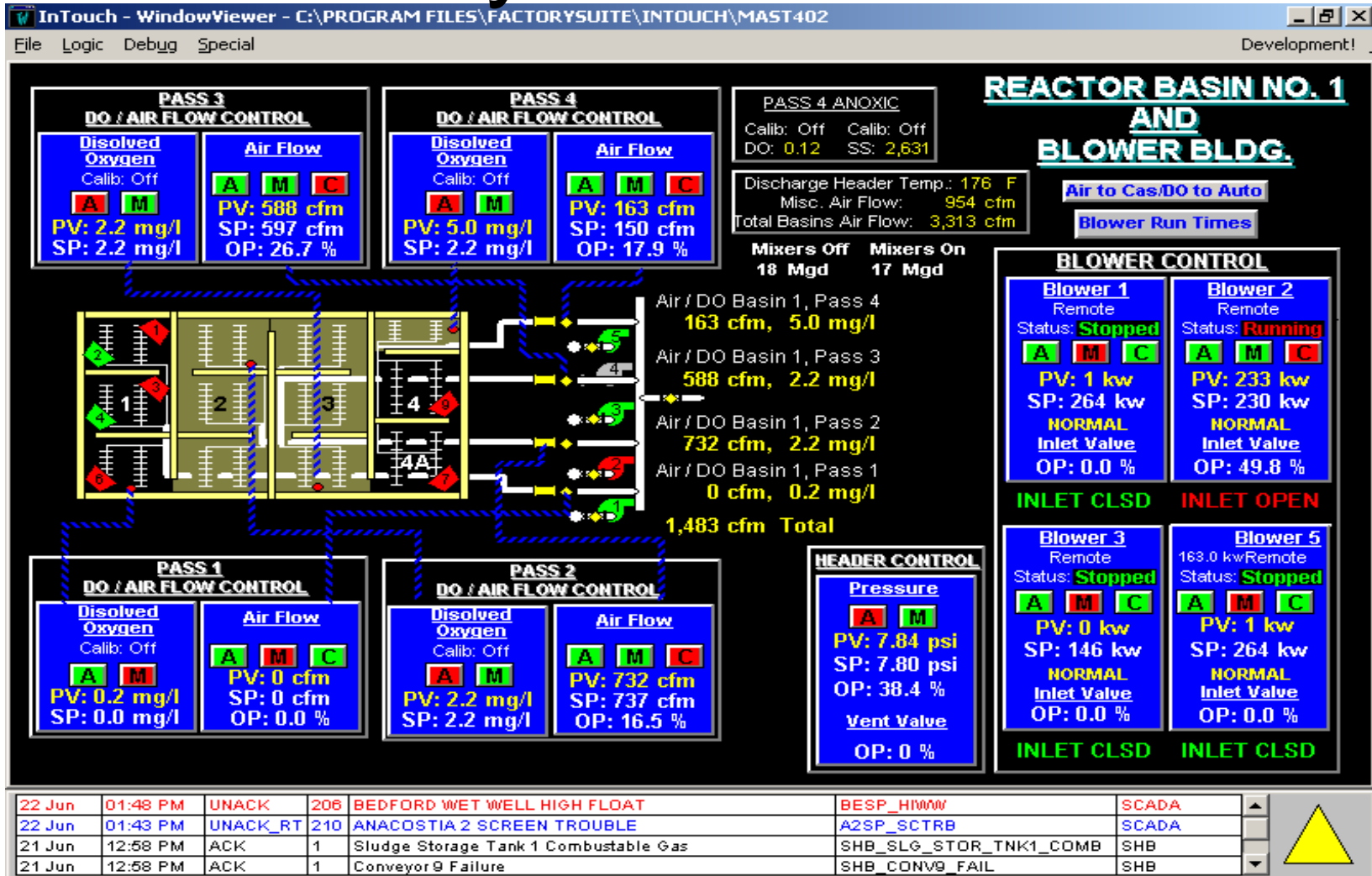
# Western Branch MLSS Meters



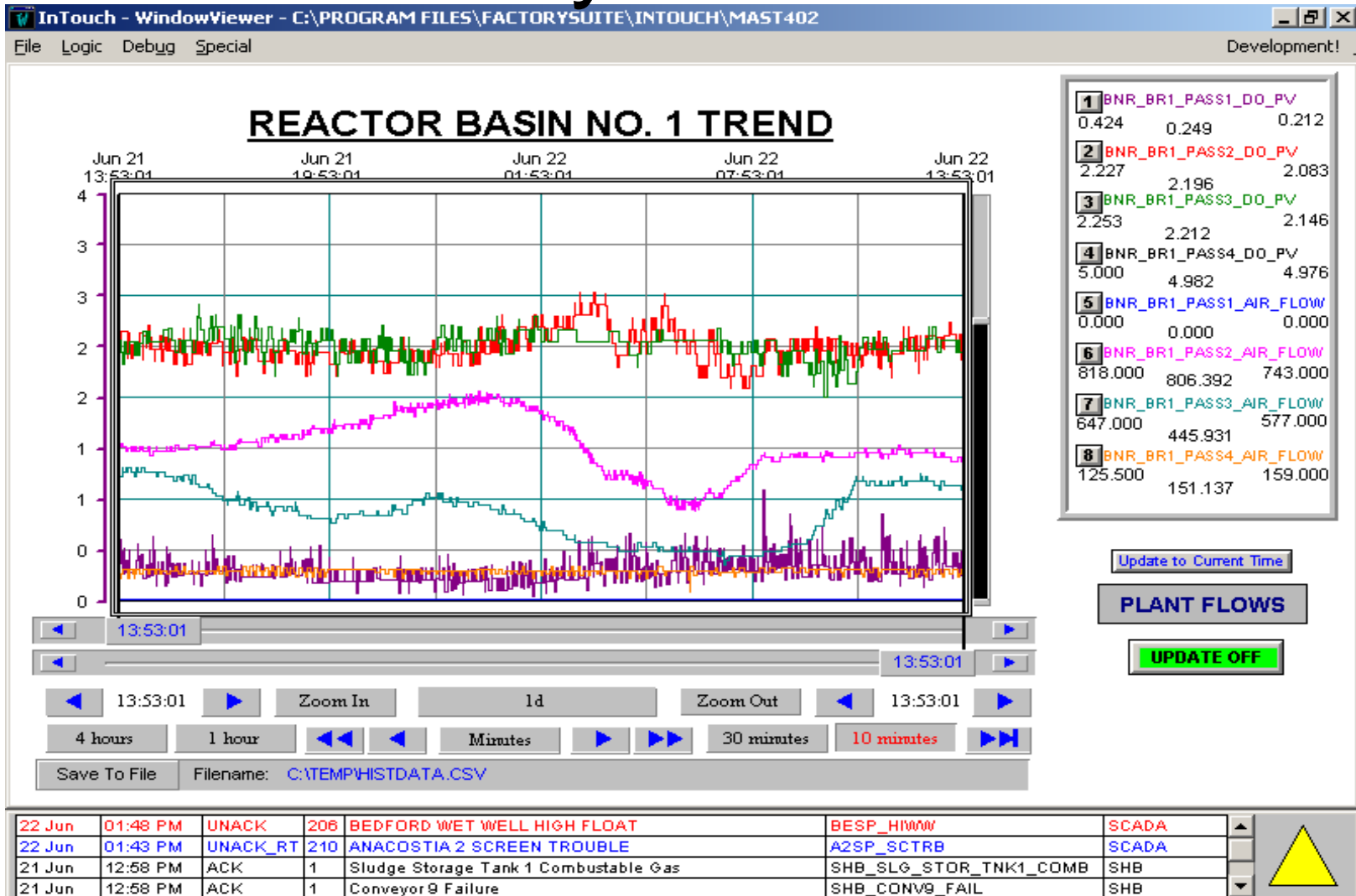
# Parkway Automation



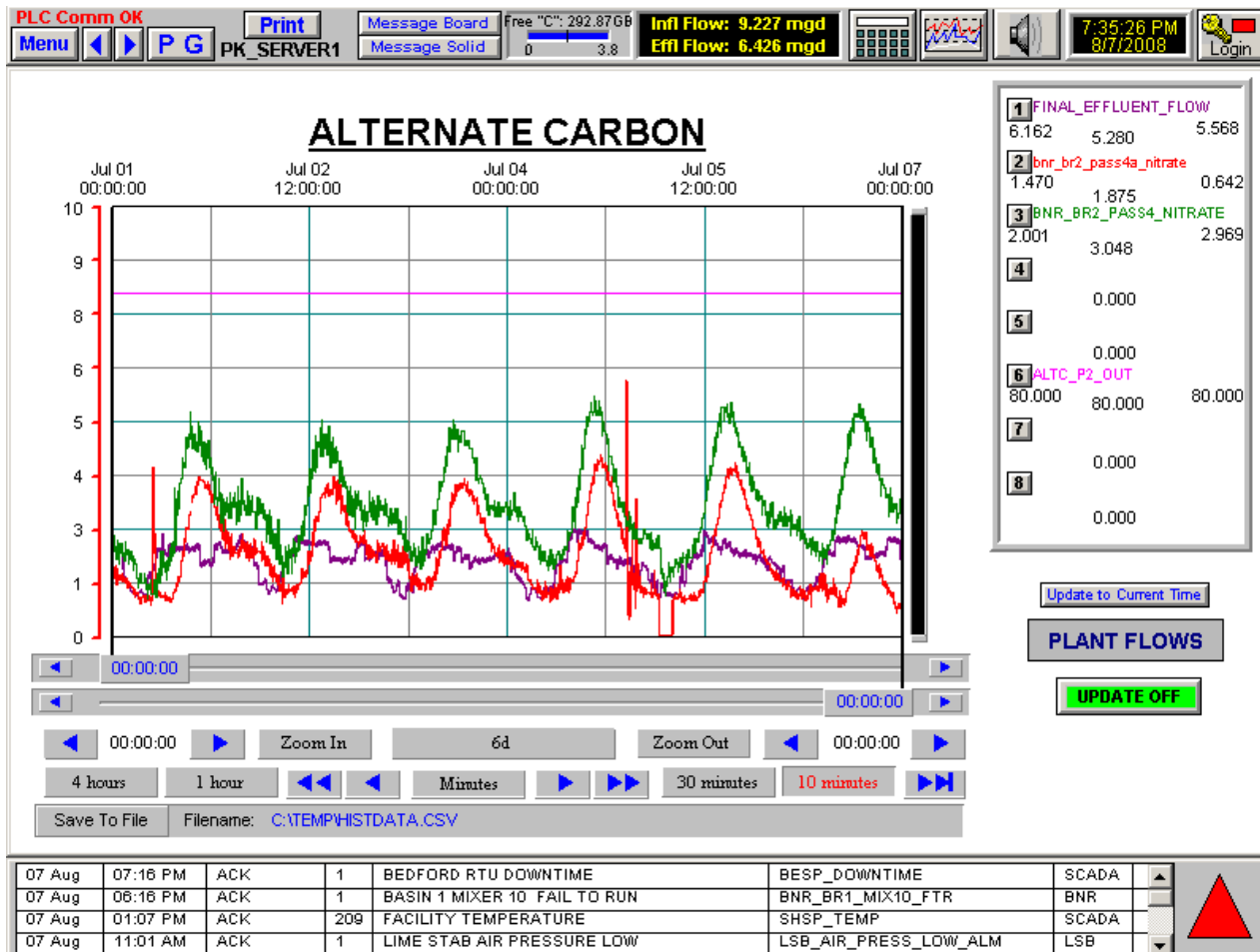
# Parkway Aeration Basins



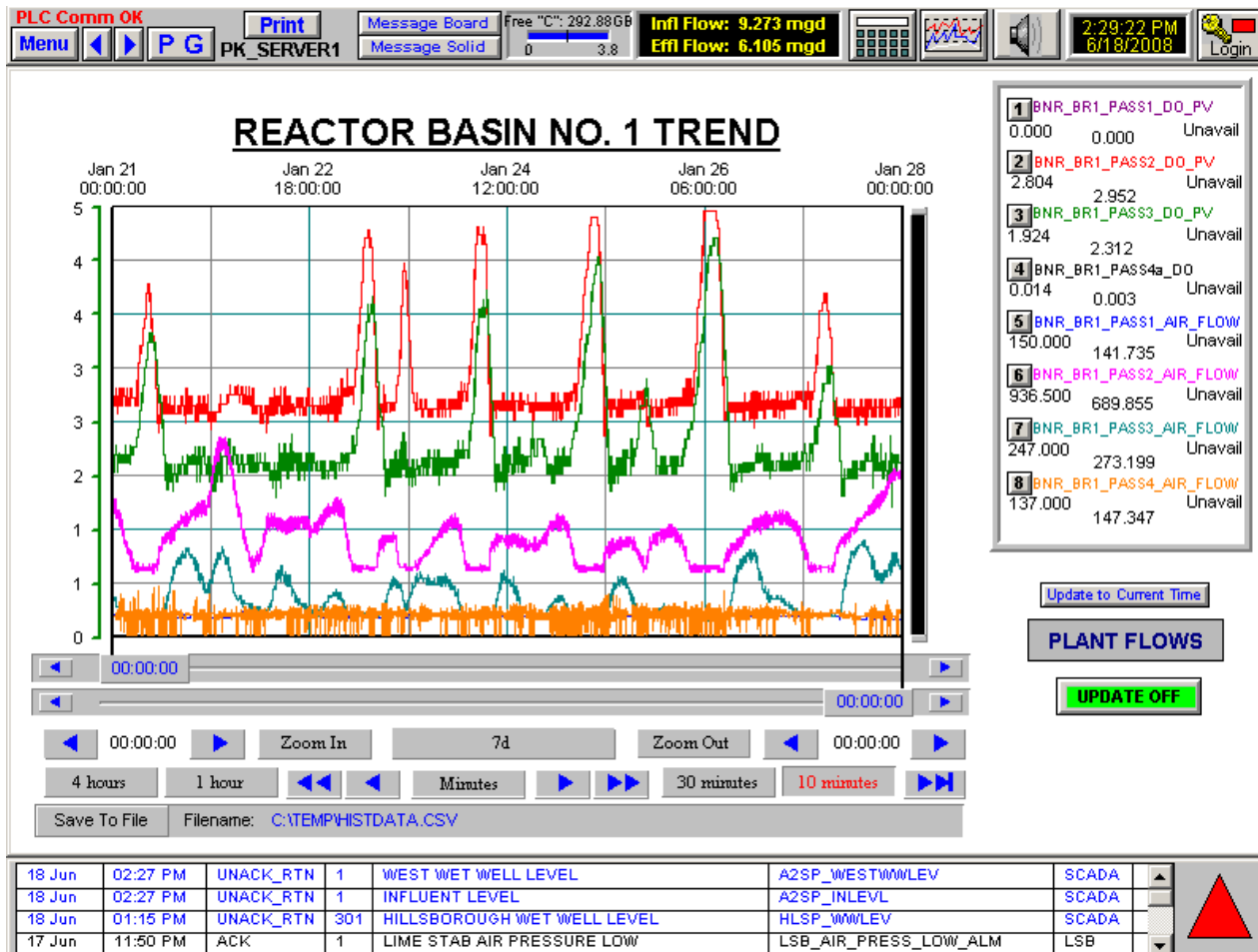
# Parkway DO Control



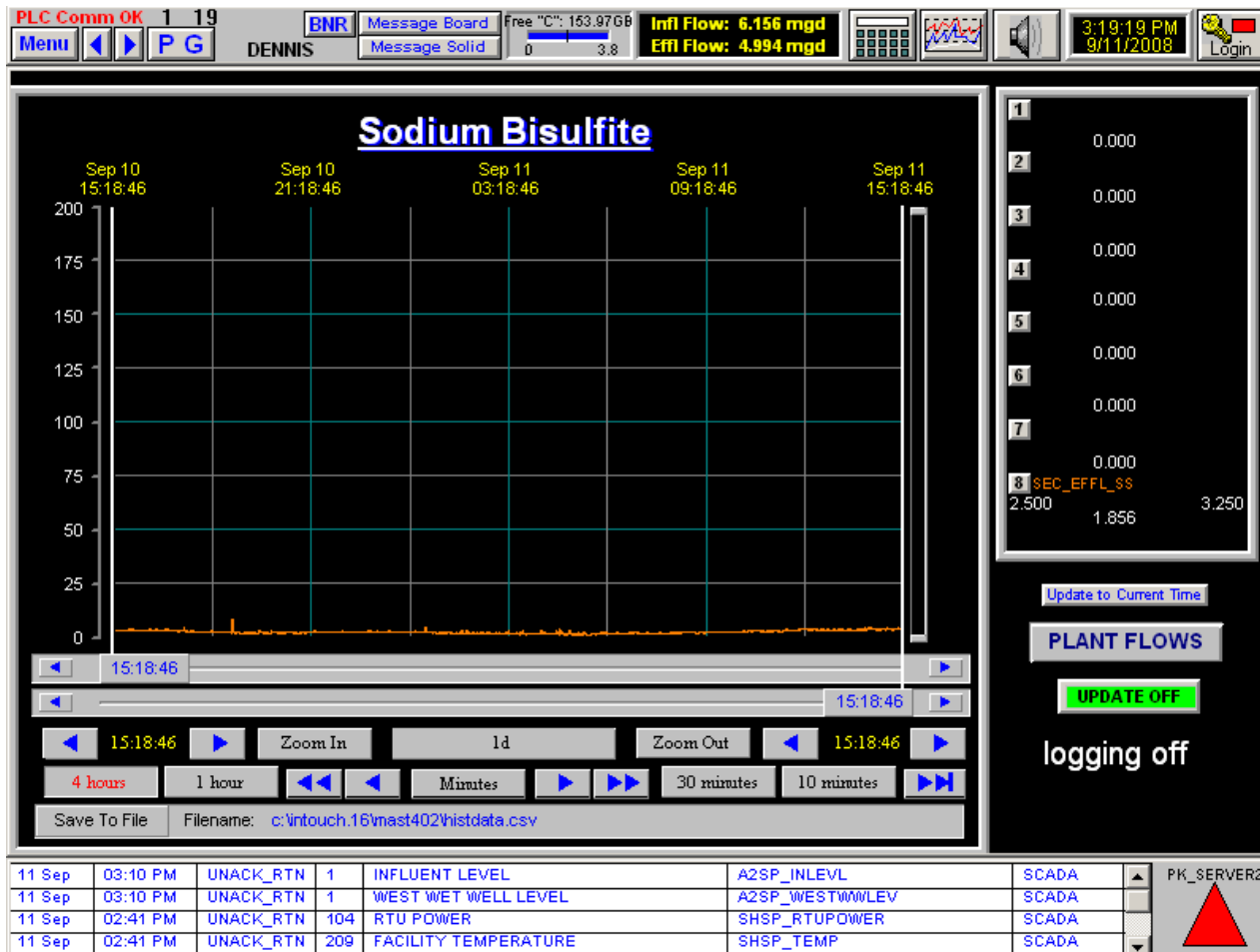
# Parkway Hach Nitrate Analyzer



# Parkway Nitrate Trending



# Parkway Effluent MLSS Meter



# Process Control Instrumentation

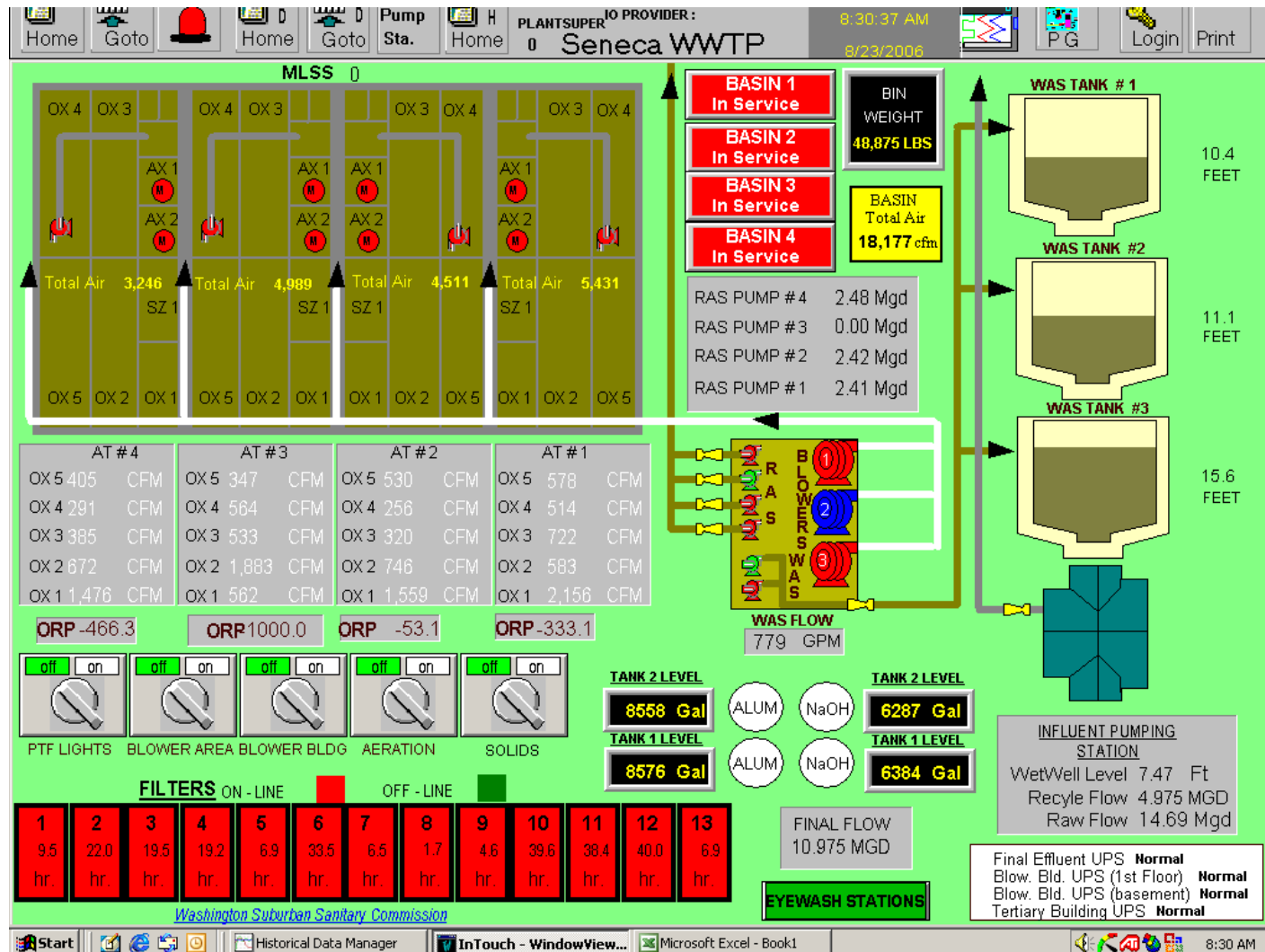


MLSS Meter

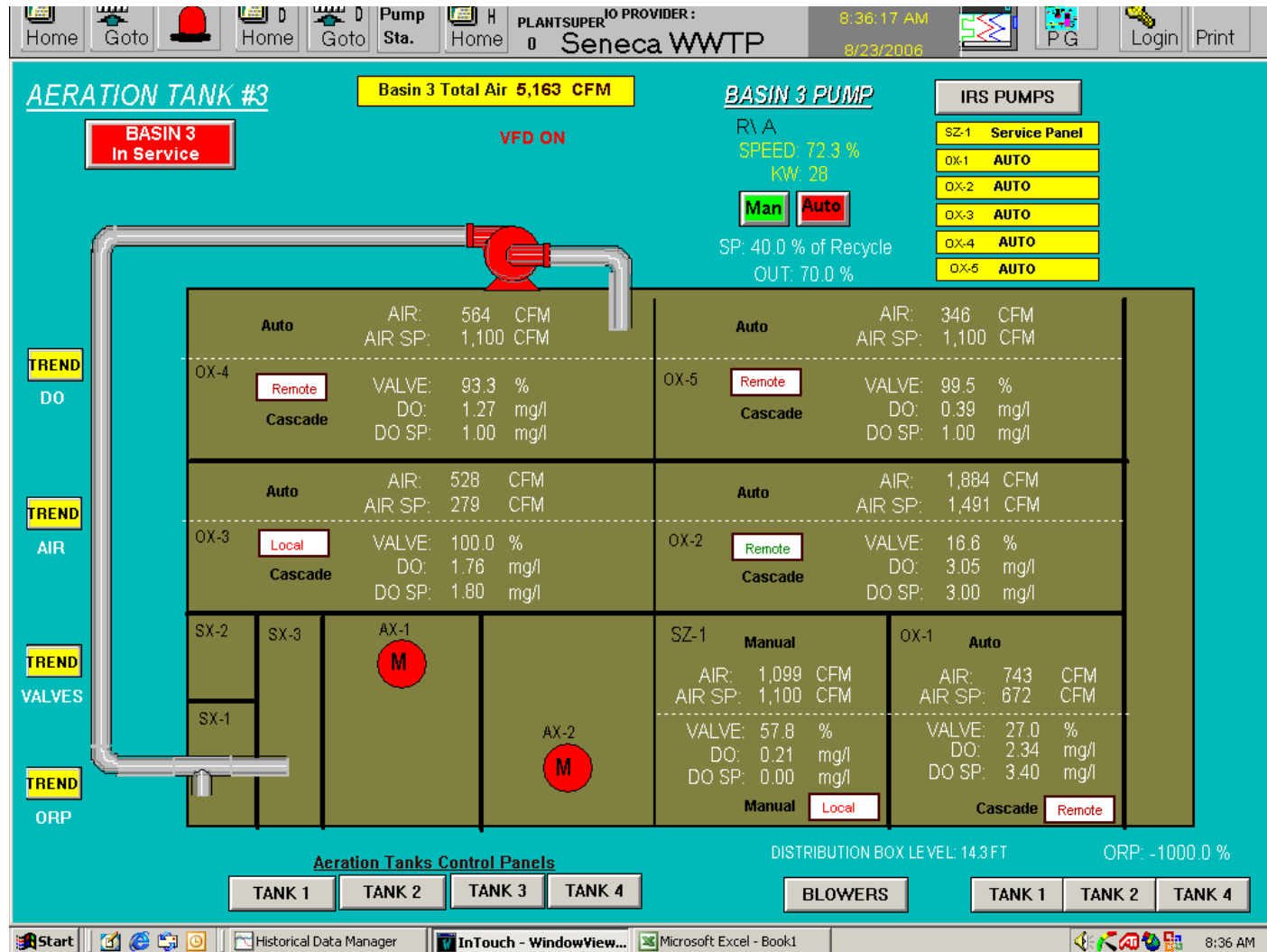


DO Meter

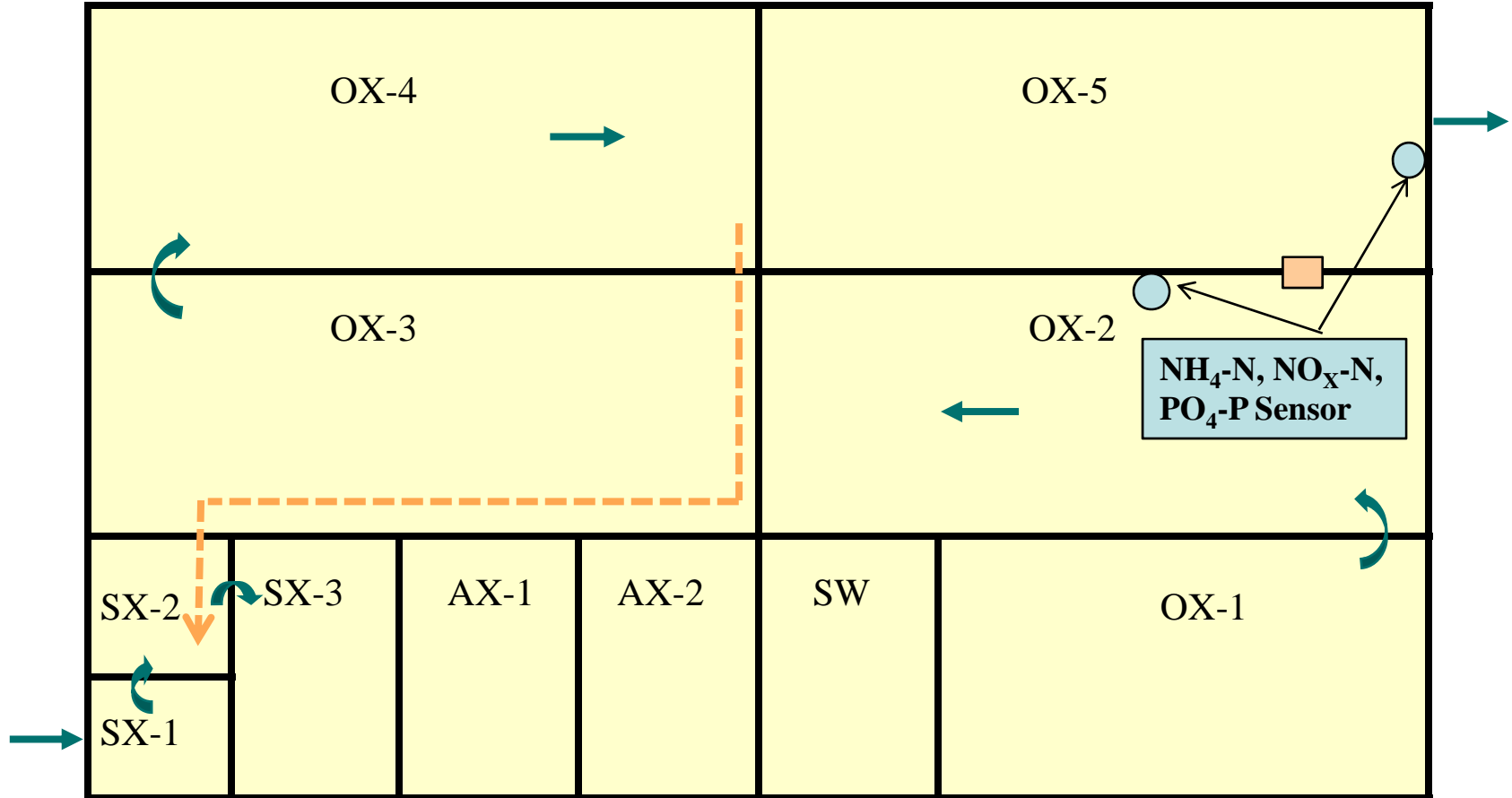
# Seneca Process Control Plant Overview



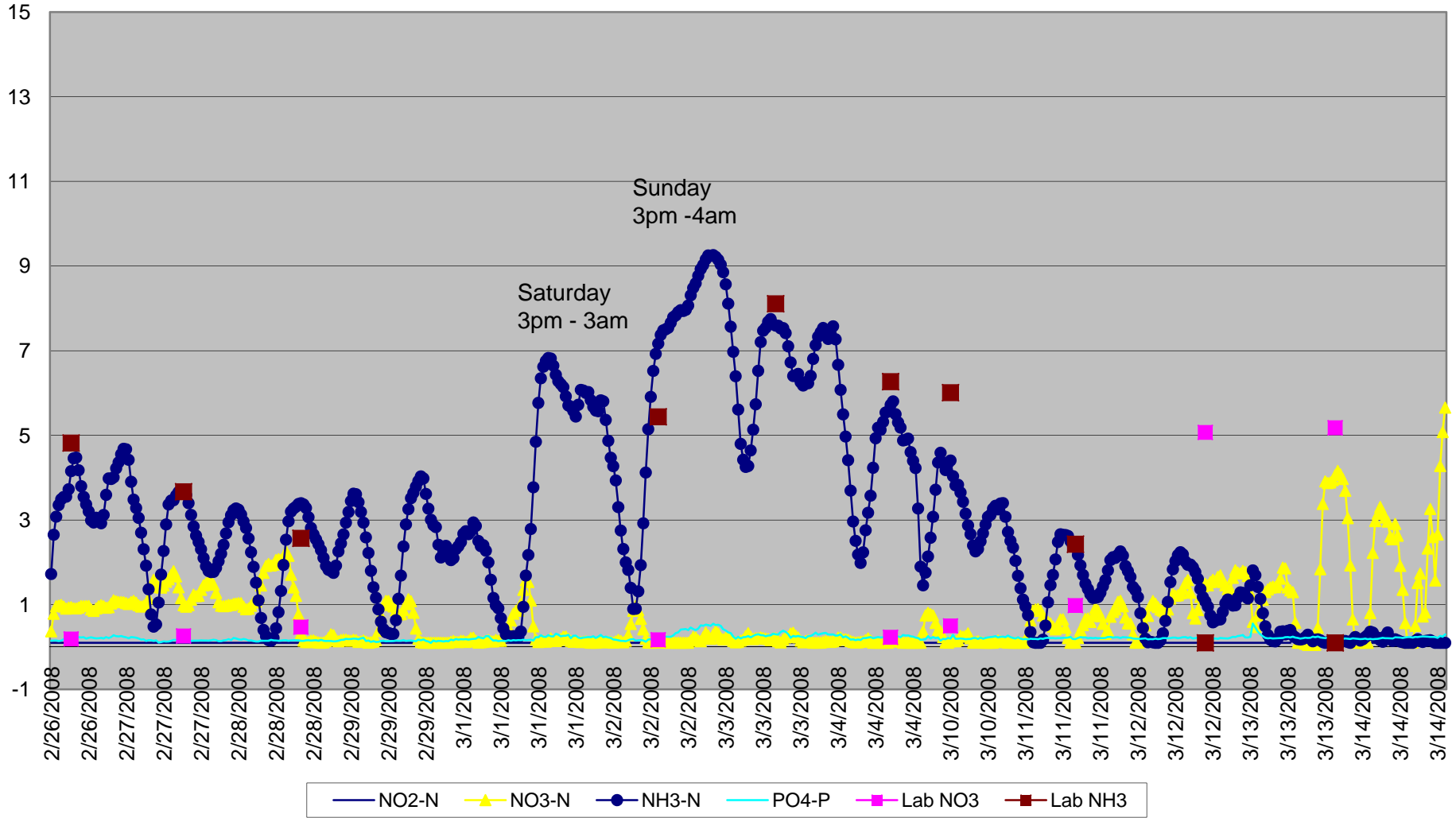
# Process Control Aeration Tank Graphics



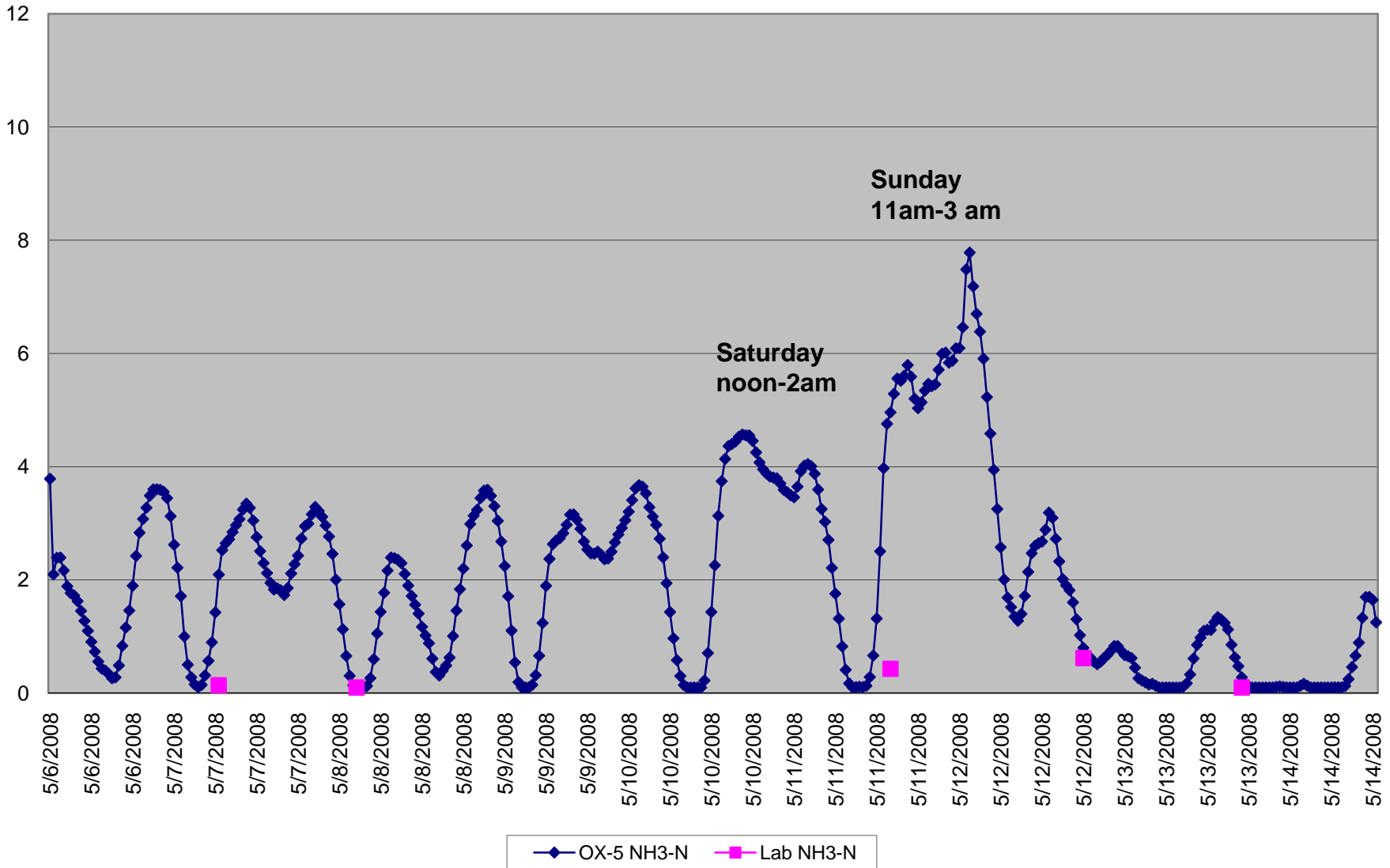
# Seneca WWTP Aeration Basin Online analyzer Pilot set up



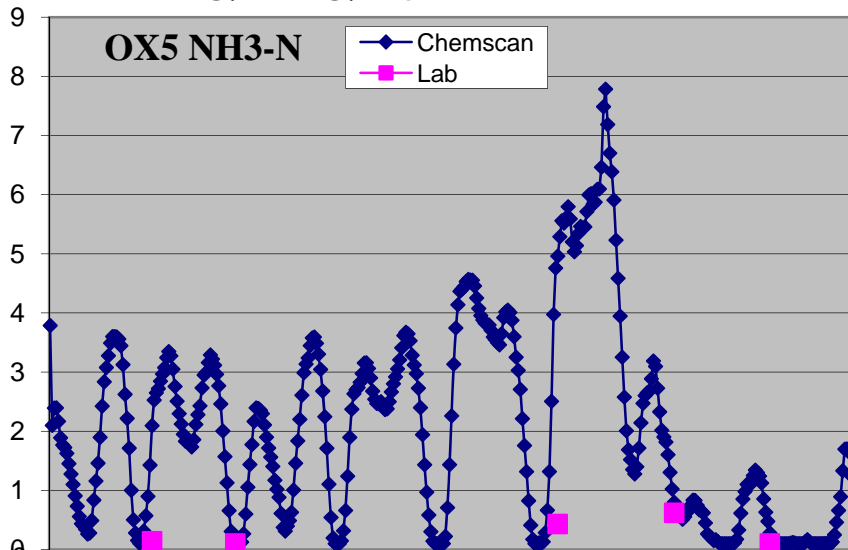
# WSSC SENECA OX-5 ChemScan Data



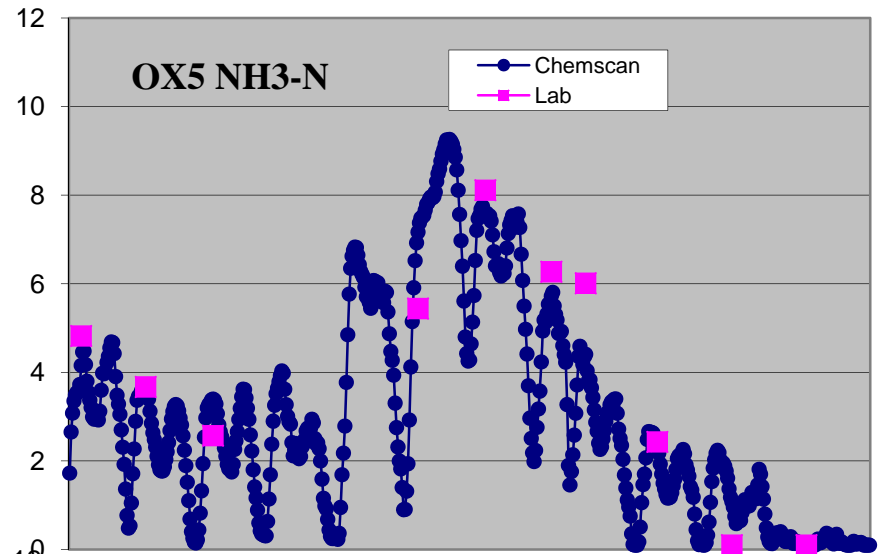
# WSSC Seneca Online Analyzer OX5 NH3-N data



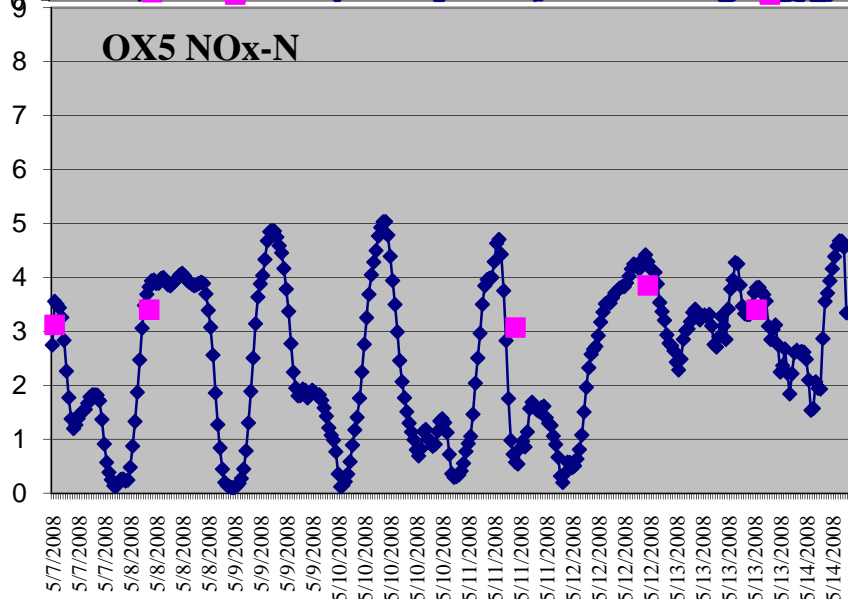
5/7 - 5/14



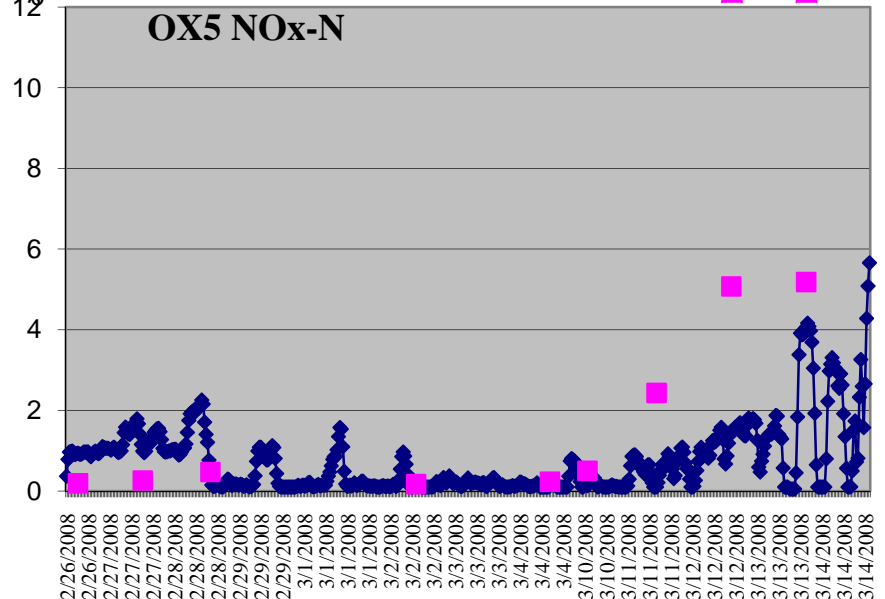
2/26 - 3/14



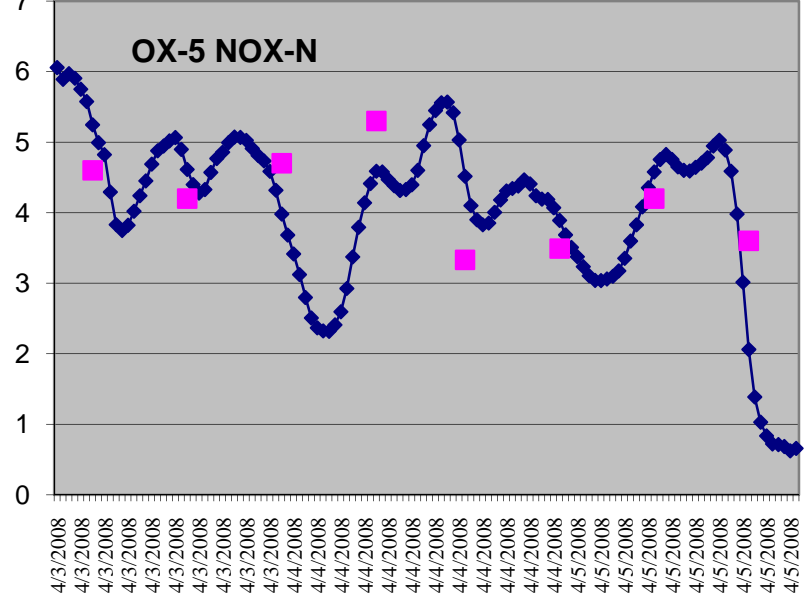
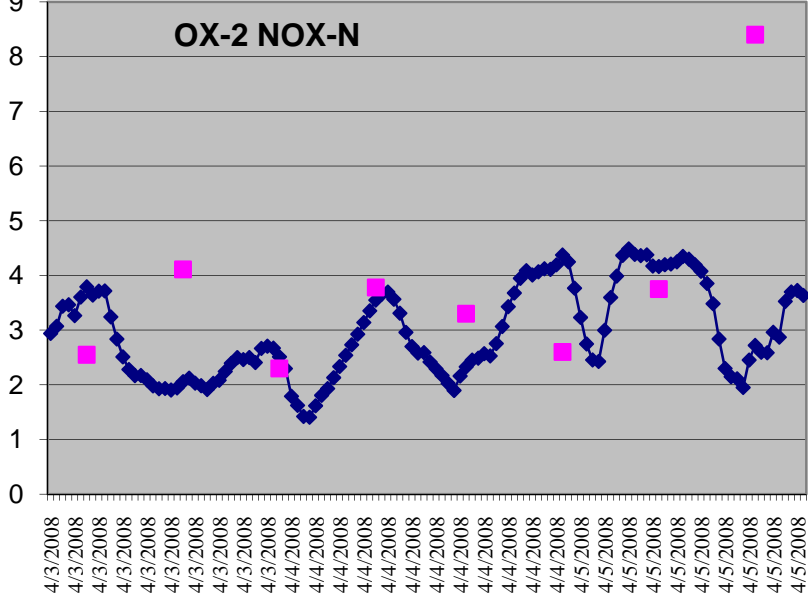
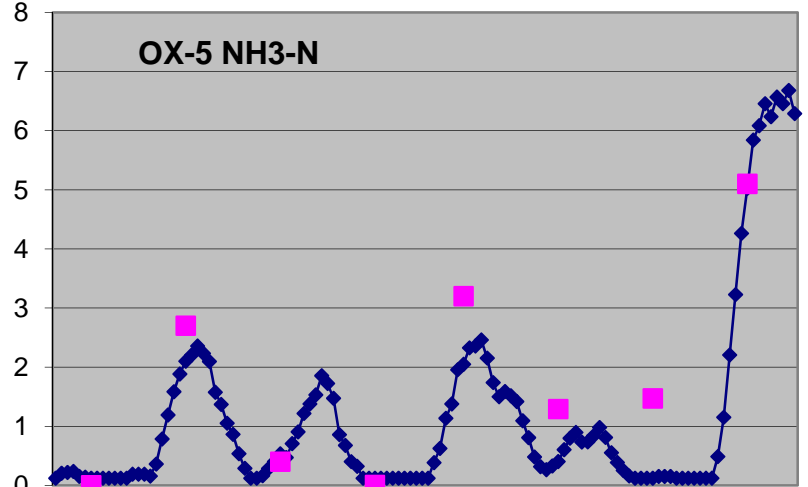
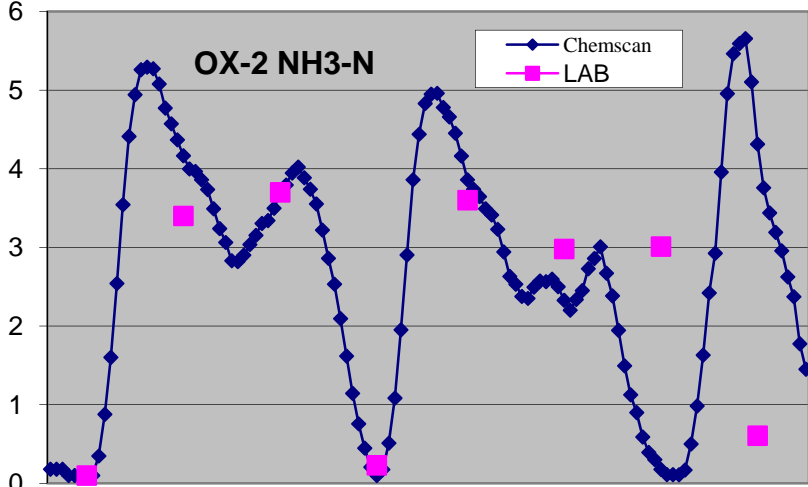
**OX5 NO<sub>x</sub>-N**



**OX5 NO<sub>x</sub>-N**



# Data Comparison (special sampling 4/3-4/5)



# DAMASCUS

